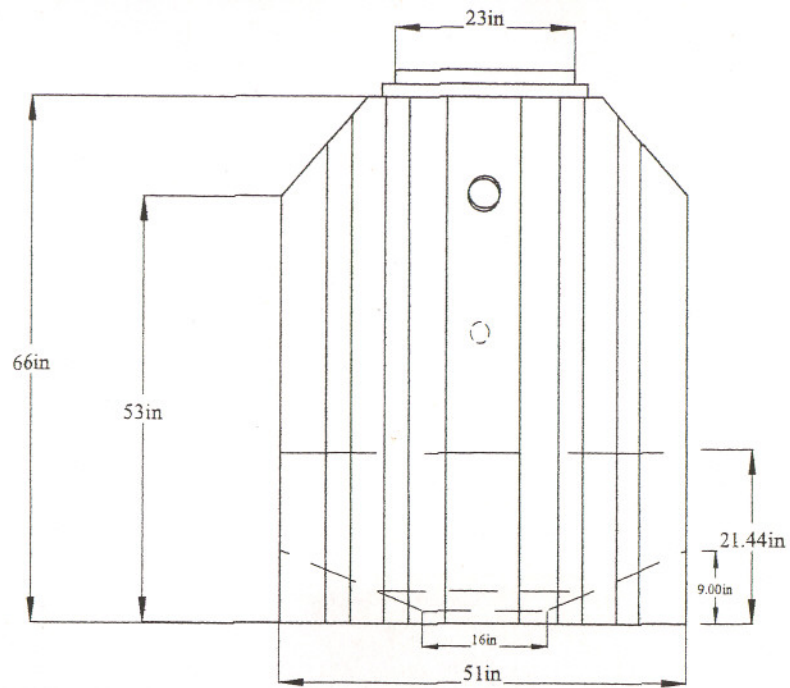
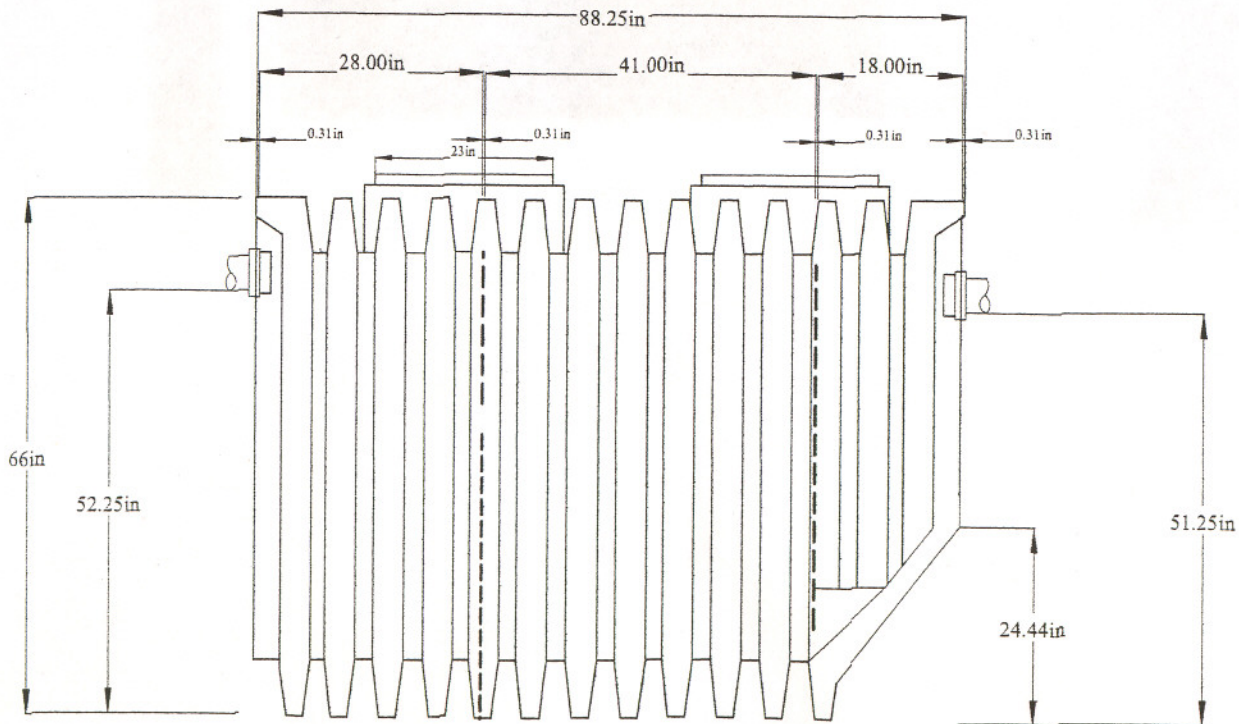


ENVIRO-FLO POLY TOP VIEW



ENVIRO-FLO POLY END VIEW



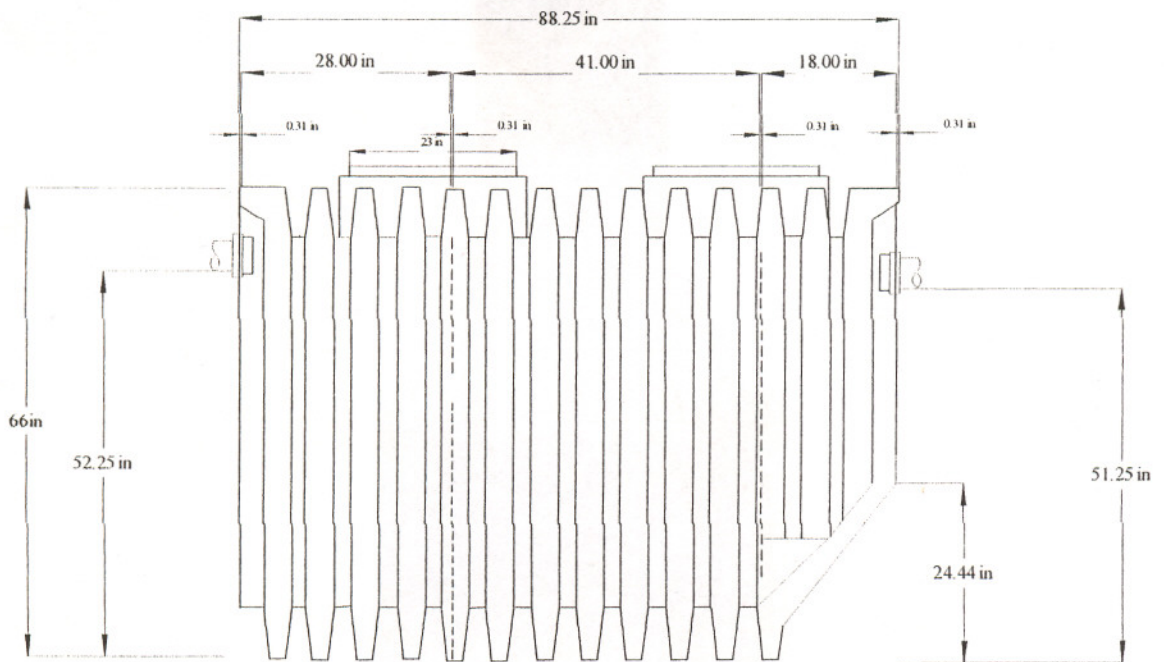
ENVIRO-FLO POLY SIDE VIEW

Polyethylene Units

While Poly units are structurally sound; care should be taken, during installation, to prevent structural damage.

1. Never install a damaged polyethylene tank.
2. Never drive automobiles or machinery over any Enviro-Flo tank.
3. Always backfill and fill tank with water after installation to prevent floating.
4. Never lift a poly tank that has water inside it.
5. Never place more than eighteen inches of dry backfill over the polyethylene tank.

BIO-ROBIX poly tanks are designed to replicate the function and quality of our concrete units. Poly tanks are an economical alternative to concrete tanks allowing installation without heavy equipment. It is not recommended that poly tanks be installed in soils with high water saturation levels.



BIO-ROBIX POLY SIDE VIEW